



Fixture housing: galvanized steel previously stove-enamelled with UV-stabilised white polyester resin; rounded edges to prevent cutting; polycarbonate end caps.

Standard supply: nylon fastening pawl.

LED: Power factor ≥ 0.9
Luminous flux maintenance 80%
50.000h (L80B20)

Photobiological safety class:

Exempt group.

Power consumption:

art. 6402 14W, 26W, 34W

art. 6502 26W, 52W, 68W

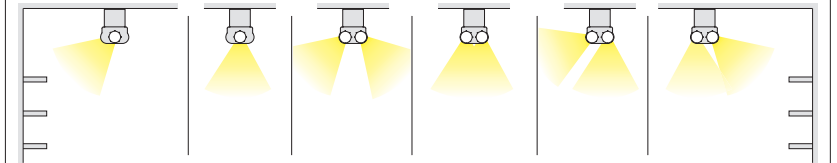
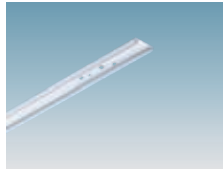


Accessories Rapid System

The LED tubes can be rotated to adjust light and therefore optimise the performance of optic accessories.

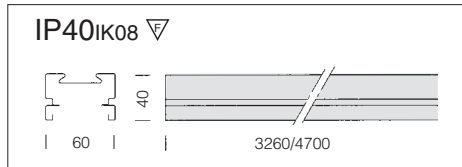
acc. 6405 upper cover	
1/2x12W	237603-46
1x24W	237617-00
1x30W	237613-00
2x48W	237624-00
2x60W	237625-00

White steel. For ceiling mounting.



6000 Rapid system - track			
		S	
length	colour	weight	code
3260	white	3.25	132900-00
4700	white	4.70	132923-00

Designed to be quickly attached to the Rapid System series luminaires.

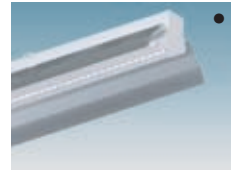
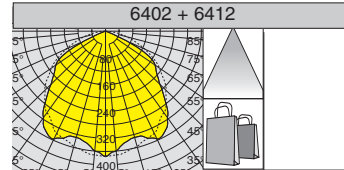
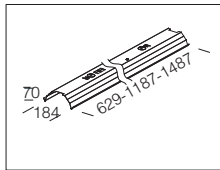
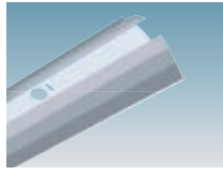


Provision for cable management



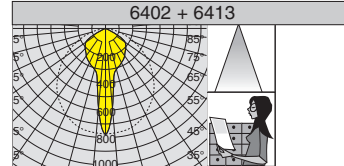
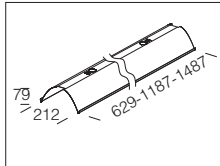
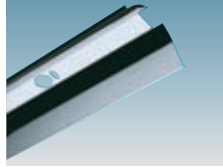
acc. 6412 wide-beam	
L=629	237729-00
L=1187	237730-00
L=1487	237731-00

Polished matt gloss aluminium 99.85, anodized 2 μ .



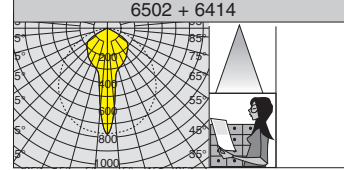
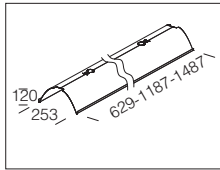
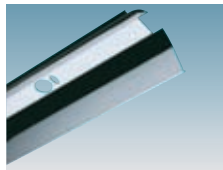
acc. 6413 narrow-beam one/lamp	
L=629	237732-00
L=1187	237733-00
L=1487	237736-00

Polished high-gloss aluminium 99.85, anodised 2 μ .



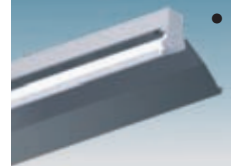
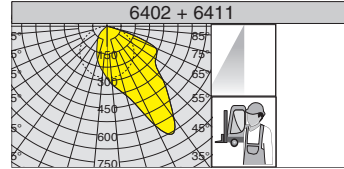
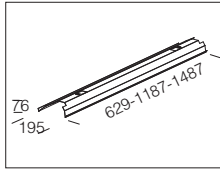
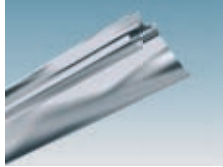
acc. 6414 narrow-beam two-lamp	
L=629	237766-00
L=1187	237764-00
L=1487	237765-00

Polished high-gloss aluminium 99.85, anodised 2 μ .

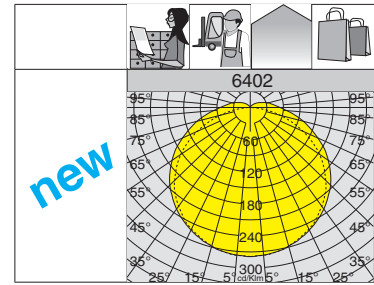
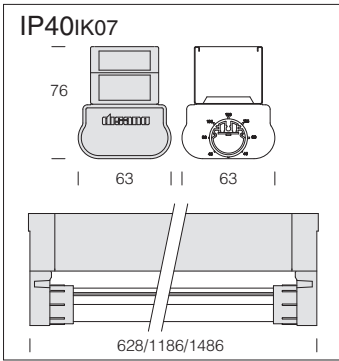


acc. 6411 asymmetric reflector	
L=629	237623-00
L=1187	237619-00
L=1487	237622-00

Polished high-gloss aluminium 99.85, anodised 2 μ .



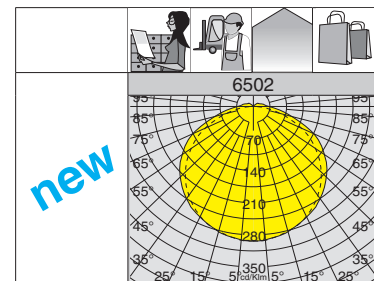
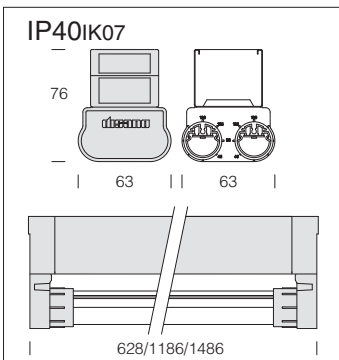
● = application examples



LED module: support in natural anodized extruded aluminium. Micro-fluted diffuser in methacrylate.

On request: 3000K versions, DIMM 1-10V and DALI.

6402 Rapid System - LED 1x									
		CLD CELL			CLD CELL-E			LED (Tj=25°C)	
wattage	couleur	weight	L	code	weight	L	code	W	K - ølm - CRI
LED 1x	white	1.10	628	237521-00				12	4000K - 2000lm - CRI≥80
LED 1x	white	1.30	1186	237522-00	1.80	1186	237522-09	24	4000K - 4000lm - CRI≥80
LED 1x	white	1.50	1486	237523-00	2.00	1486	237523-09	30	4000K - 5000lm - CRI≥80



LED module: support in natural anodized extruded aluminium. Micro-fluted diffuser in methacrylate.

On request: 3000K versions, DIMM 1-10V and DALI.

6502 Rapid System - LED 2x									
		CLD CELL			CLD CELL-E			LED (Tj=25°C)	
wattage	colour	weight	L	code	weight	L	code	W	K - ølm - CRI
LED 2x	white	1.10	628	237541-00				24	4000K - 4000lm - CRI≥80
LED 2x	white	1.30	1186	237542-00	1.80	1186	237542-09	48	4000K - 8000lm - CRI≥80
LED 2x	white	1.50	1486	237543-00	2.00	1486	237543-09	60	4000K - 10000lm - CRI≥80